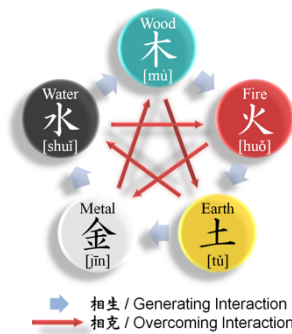


# Ni Hao, Wuxing by D'Gers

Wuxing is usually a translation as Five Phases.



The system of five phases is conceptual scheme that many traditional Chinese fields used to describe interactions and relationships between phenomena.

After it came to maturity in the second or first century during the Han dynasty.

It was employed in many fields of early Chinese thought, such as Yi Jing divination, alchemy, feng shui, astrology, traditional Chinese medicine, music, military strategy, and martial arts.

What are the "Five Phases" ?

**1-Fire (火 huǒ), 2-Water (水 shuǐ), 3-Wood (木 mù), 4-Metal or Gold (金 jīn), and 5-Earth or Soil (土 tǔ).** This order of presentation is known as the "Days of the Week"

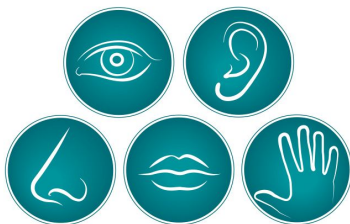
The five phases are around 73 days each and are usually used to describe the state in nature:

- Wood/Spring: Period of growth, which generates abundant wood and vitality
- Fire/Summer: Period of swelling, flowering, brimming with fire and energy
- Earth: The in-between transitional seasonal periods associated with levelling, and fruition
- Metal/Autumn: Period of harvesting and collecting
- Water/Winter: Period of retreat, time for stillness and storage

My vision of the environment

**Articulated around the five senses - Sight, Taste, Touch, Hearing and Smell** – collect information about our environment that is interpreted by the brain.

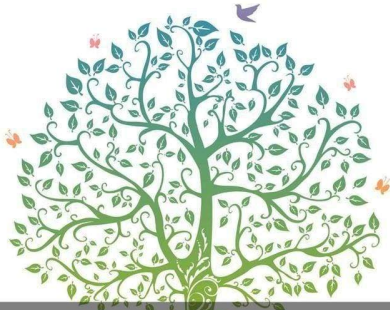
In our daily life we are keep practicing our senses, they keep us alive.



- We SMELL; we Inhale scents every day.
- The SOUND; we are listening ; people, silence, music...
- The SIGHT; we constantly do eye exercises, observe...
- The TASTE; drinks and foods...
- TOUCH; feeling things, touching a pen, phone, face ...

The 5 senses are meaningful help to navigate on earth.

# My project reflects our life in our environment.



The Tree of Life

**The Tree of Life** symbol represents our personal development, and uniqueness.

A tree of life is distinguished from all the other trees that you find in the nature, by its appearance.

The tree has three parts; the roots particularly deeply anchored in the earth, the trunk and his very arborescent long branches that give the impression of touching the sky.

Due to its shape, the tree of life is the symbol of many elements, both spiritual and character. It has many benefits from which human beings retrieve the source of happiness and serenity.

The tree is a symbol of longevity, of eternal life because of its branches whose ramifications seem to extend to infinity.

I want to figure our life, our action, our trip, our growth, and our consideration for the environment By doing a tree of life ", it refers to daily life, roots, memories, and future...

My artistic concept based on mix media technic use recycled green materials to create vibrant 3Dtexture Artwork. This is unique in Singapore

The concept of "Art environmental" requested by ARTEN14 for this project naturally attracted my willingness and eagerness.

## Representation

- **The use of a real tree branch**, covered with metallic paint represents the link between 2 important steps in our life ; the growth and the harvest periods
- **On the branches**, buds, flowers, are signs of evolution over the time, done with upcycling materials such as recycled water bottles, caps, cork...
- **The use of metallic bottle** of soda designed like a fish, and a jellyfish represent the protection of the oceans and their animal species
- **Others elements** emphasizes the need to sustain ourselves and our environment to remain longer ;

**The dreamcatcher** is a protective talisman used to protect people from nightmares and bad dreams.

**The carillon** is an accessory that people cling to the entrance of their house to keep away the bad vibes and bring good flow of energy throughout the house.

It makes people more serene, more active, and more in harmony with themselves.

In Asian culture, the two natural elements wind and water are the essential vectors for a good circulation of energy in the space essential to our well-being.

-**The suitcase** represents myself, traveling, meeting other people, living new adventures, accomplishing new challenges, throughout my circle of life.

In the suitcase:

The soil, illustrates the ground and the earth, the starting point of all living species

The fire : the evolution of species through fire. Fire is essential to our life. The domestication of fire is a major step in human evolution.

The fire, the source of light and heat helps to create a more hospitable living environment, to cook food and to protect people. ( Stanley Kubrick – Space Odyssey 1977...)

### **-Picture of facemask / use of facemasks**

At the arrival of the covid19 pandemic, I created a new brand "Hello Art", a collection of fashions art products, for every day uses and perfect for corporate gifts.

My objective is to offer accessible Art to everyone in order to elevate daily life through a new Art experience.

Although the surgical masks has been recognized efficient and light, I cannot promote their use. Today it is a daily danger for the well-being endurance of the environment.

I have created Art facemask featuring my artworks, comfortable, offering values of culture, education, and caring through Singapore Art designs.

My facemasks are on Sale ; I am connecting with school, Singapore board tourism, GOV, and corporate with more than 200 employees. ! 1\$ for each mask sale is for VSA charity Singapore ; share with others, given gains spirit.



**-Piece of colored fabrics with wishes, blessings written on , in reference to**  
The prayer tree is a religious custom practiced in many parts of the world.

The wish tree is part of a long tradition originating in Asia. For Hindus, it represented above all the necessary detachment from desires to achieve freedom. in the Kalpataru myth, a sage advises children to entrust their wishes to this tree.

The wish tree has become the one to which we entrust our most secret aspirations, individually or collectively.

In China, tradition has it that on New Year's Eve you hang your dearest wish in a tree. In Japan, during the feast of Tanabata multicolored paper strips adorn the bamboo branches. In Great Britain, they preceded the traditional Christmas tree.